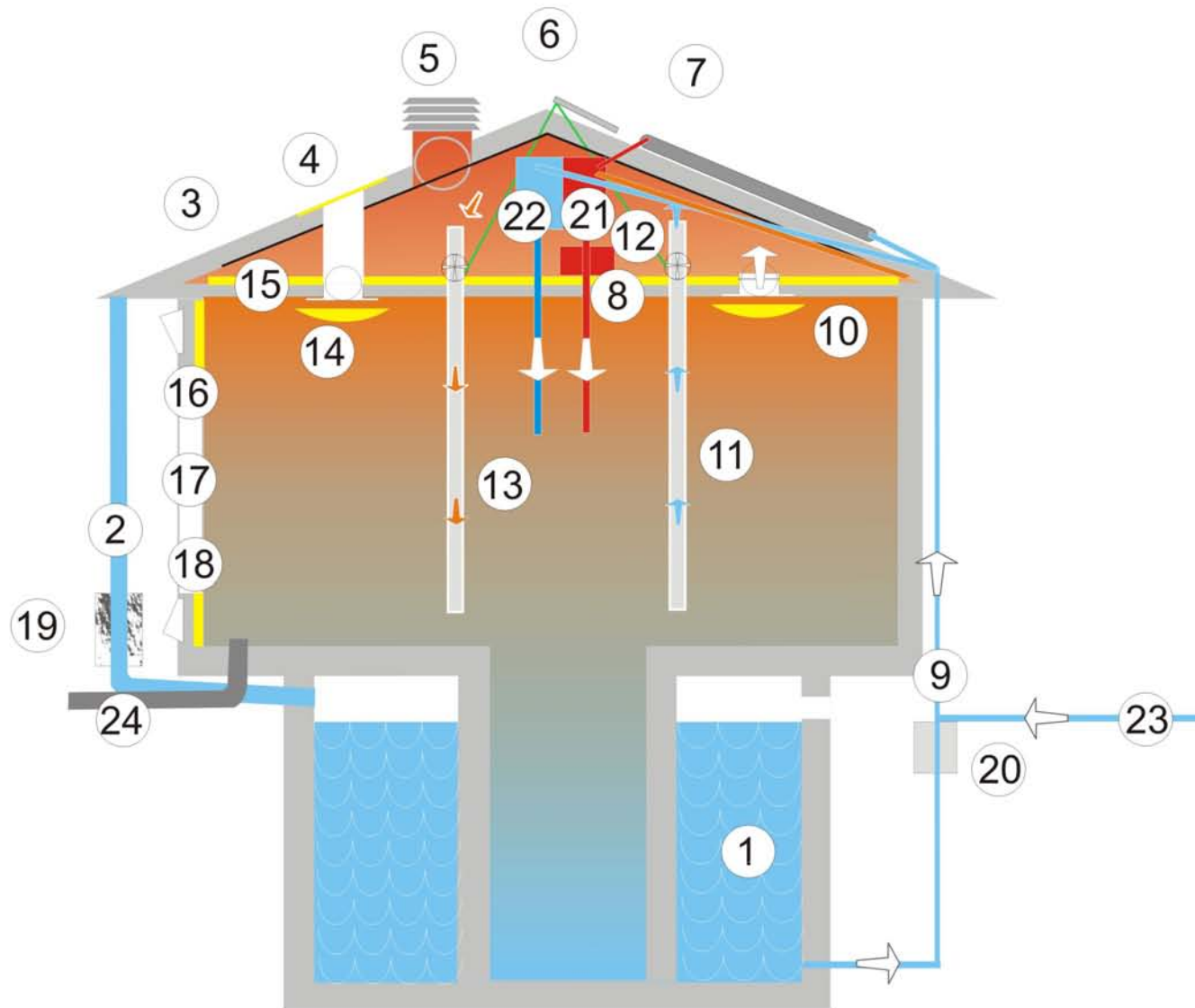


# CONDOR KINETIC ECO/ ENVIRO HOUSE DESIGN



- 1 Water Tank / Concrete
- 2 Water Down Pipe from Roof
- 3 Steel Roof
- 4 Polycarbonate Roofing
- 5 Condor Roof Ventilator
- 6 Roof Solar (PV) Panel
- 7 Roof Solar Hot Water Panel & PV Panels
- 8 Water Heater Booster (Inline)
- 9 Storage Water/ Mains/ to Gravity Header
- 10 Lighting (fluoro)/ Exhaust
- 11 Duct Heating (Out)
- 12 Solar Powered Fan
- 13 Heating Duct (In)
- 14 Lighting (fluoro)/ Natural
- 15 Thermal Insulation
- 16 Wall Vent (Out)
- 17 Double Glaze Windows
- 18 Wall Vent (In)
- 19 Water filter (inline two stage)
- 20 Water Pump
- 21 Hot Water storage unit (insulated) (gf)
- 22 Cold Water storage unit (gf)
- 23 Water (alternate source)
- 24 Septic / Sewer system

Needless to say the inclusion of appropriate verandahs, screening and/ or barriers would further enhance the characteristics directed toward energy efficiency and in the maintaining of desired comfort levels